

# Comby

Precision combined  
with freedom



DOT PEEN TECHNOLOGY



STATION & PORTABLE USE



CONTROLLED BY TABLET



## CONNECT.series®

**TECHNO**mark®  
— smart traceability

# BENCHTOP MODE

## Precision with simplicity



MARKING OF SMALL TO MEDIUM-SIZED PARTS UP TO 295 MM HIGH

### All-in-one column base

- Easy, precise positioning thanks to the adjustment wheel
- Ergonomic base for mounting multiple clamping systems on universal T slots
- Compact: easy installation on a workbench

### Robustness and stability

- Cast aluminium base and steel column
- Marking head with protective bumpers and technical plastic shell
- Weight of column base: 11 kg

### Marking window

120 x 60 mm

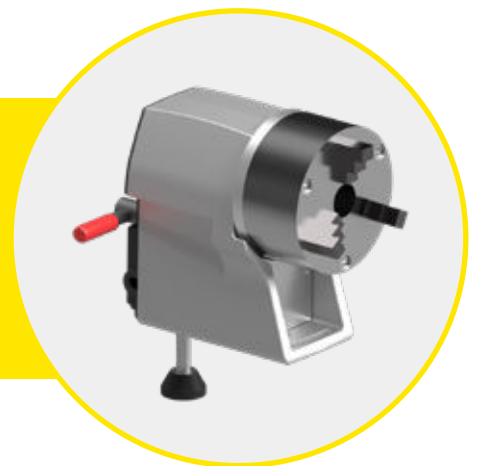


### Intelligent Driving Impact (IDI)

Unique function automatically adjusts distance between part and stylus during marking enabling marking over uneven surfaces from 3-8 mm in height.

### Connect.series D-axis

- Marking on the circumference and indexing around cylindrical parts
- Compatible with 120D marking head
- Exclusively available on tablet for optimal setting comfort



# DRIVING SOFTWARE

## On-board performance



**Controlled by tablet\***  
with an application developed  
by Technomark

- Landscape mode display
- Creation and modification of marking files
- Import of marking files and logos from a PC
- Visualization of the marking area on the screen
- 2 levels of use:
  - **administrator mode** to create marking files
  - **production mode** for opening & filling pre-configured files
- Maintenance module
- Error display

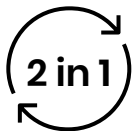
\*Connect.App application also available on smartphone. Tablet not included.



Intuitive and  
easy to use



Portable  
control unit



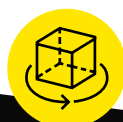
**2 in 1 machine**  
Switch from a portable to a  
benchtop mode in less than 10s



Lightweight marking  
head: 3.2 kg



360° use of the  
machine



Illuminated  
marking area



### Licence pack

- **« Datamatrix » licence**  
Generation and marking of 2D codes
- **Logo licence**  
Insertion and marking of logos
- **« Font creator » licence**  
Creation of custom fonts
- **Scan licence**  
2D code scanning (using the tablet's camera)

### APPLICATION



Compatible with Android 10+

CONNECT.series®

Patented machines





## Wireless communication

between the marking head and the tablet

within 10 m



SECURE WIFI PROTOCOL



FREEDOM OF MOVEMENT



INDOOR AND OUTDOOR MARKING



PAIRING OF HEADS THROUGH  
THEIR SERIAL NUMBERS



## PORTABLE MODE

# Traceability in motion



MARKING MEDIUM TO LARGE PARTS  
HEAVY OR DIFFICULT TO ACCESS



## Energy self-sufficient

22V lithium ion battery integrated in head

- Sufficient battery life for one day of marking
- Specific battery design for better electronics, autonomy and software combination
- Lightweight, performance and durability guaranteed



## Support foot 5 in 1

1. Non-slip-foot
2. Magnetic support with magnets
3. Marking on flat parts
4. Marking on small and large cylinders with two pairs of locating V's
5. Positioning support with support guide



## Storage dock

- Head support with workbench mounting option
- Stylus, springs and support guide storage
- Maintenance: checking the condition of the spring and the sharpening angle of the stylus

OUR ADDED VALUE

# Long-term support

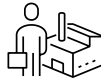
## Pre-sale



FEASIBILITY  
STUDY



SAMPLES  
MARKING



ON-SITE  
TESTING



CUSTOMIZATION

## After sales



HELPLINE



TRAINING



SERVICE AND  
MAINTENANCE CONTRACT



REPAIR



LOAN OF EQUIPMENT

**TECHNOmark**<sup>®</sup>  
——— smart traceability



1, allée du développement  
42350 La Talaudière - France  
+33 (0)4 77 22 25 91  
info@technomark-marking.com

[www.technomark-marking.com](http://www.technomark-marking.com)



**47** countries

WORLDWIDE PRESENCE THROUGH OUR  
DISTRIBUTORS AND 3 SUBSIDIARIES

**99%**

AVERAGE CUSTOMER SATISFACTION  
RATE OVER 3 YEARS

**22 500**

YELLOW MACHINES IN SERVICE  
WORLDWIDE, ALL TECHNOLOGIES

**10%**

OF TURNOVER DEDICATED TO R&D

